



DATA SCIENCE COURSE



Head Teacher
ASHISH BARDE

RISE INSTITUTE

We dedicate ourselves to providing the best education and job opportunities for students and working professionals.



RISE INSTITUTE



OUR VISION

Empowering through education, Rise Institute envisions a world where every individual, regardless of their past achievements, can access transformative learning opportunities. Our goal is to guide them towards fulfilling their aspirations, particularly in the realm of development, fostering a community enriched with inspiring role models both in society and the business sphere.



OUR MISSION

Rise Institute aims to be an exceptional education hub that provides lifechanging learning. We're here to support even those who might not have excelled before, helping them land their dream jobs, especially in the development sector. Together, we're building more community and business role models.

+91 7972131295

Join our Process Introduction Session to discover our selection approach and placement support – your gateway to enrolling. Wishing you an enjoyable learning experience!

 [riseinstitute.tech](https://www.riseinstitute.tech)

 [@riseinstitutemumbai](https://www.instagram.com/riseinstitutemumbai)



Meet the Founder

MR. ASHISH BARDE

ABOUT ME

I am Ashish Barde, the Microsoft Power BI Certified Data Analyst, Business Intelligence Developer, TSQL & PLSQL Engineer, Power BI Analyst, Founder & Managing Director at RISE Institute, Navi Mumbai.



WORK EXPERIENCE

Microsoft Certified Data Analyst Worked on Google(GMB) Project, Experience as Business Analyst, Data Analyst, BI Developer, PLSQL/TSQL Engineer, Power BI Analyst

Always remember, success in life is not easily achieved. First, it is necessary for us to become worthy of it. If you aim to achieve success in a short period, learning trending technologies becomes essential, paving the way for a good job with a good salary.

CONTACT DETAILS

If you need anything, please feel free to contact me
riseacademy777@gmail.com
+91 7972131295 / 9326191260



Lets have a look on
our 32

Advance Modules

FROM RISE INSTITUTE

*"The Secret of Getting Ahead
is Getting started"*

DATA SCIENCE COURSE

SYLLABUS

Support after course

Repeat sessions

HR/Tech/Manager

Interview

Resume Making by

Experts

Personal Assistance for

Placement

[Getting Started]

INTRODUCTION

What is Analytics?

Different types of Analytics.

Importance of Analytics in Business.

Organizations using Business Analytics

DATA & ANALYTICS

Data Dictionary Data Types

Data Handling

Business Data Using Excel

INTRODUCTION TO EXCEL ENVIRONMENT

Understanding of data calculations in excel.

Formatting of data calculation formatting.

MS Excel functions

Understanding about Sorting.

Filtering & Validation MS Excel charts Pivot
Table

Understanding of Data Tools Panel.

Basics of Macro Recording

DASHBOARD DESIGNING IN EXCEL

Introduction to Dashboards

Trends and Scenario using charts

Advanced charting Techniques

Designing Sample Dashboard using from
controls Tips and Tricks to enhance
dashboard designing.

SYLLABUS

DATA SCIENCE COURSE

Support after course

Repeat sessions

HR/Tech/Manager

Interview

Resume Making by

Experts

Personal Assistance for

Placement

BASICS OF STATISTICS

Data types and its measures.

Random Varieties it's application with exercises.

Probability Applications with examples.

Discrete probability distribution

Computing probability from normal distribution Central limit theorem for sampling.

INTRODUCTION TO DATA SCIENCE

What is Analytics and Data Science

Overview of Analytics and Data Science

Why is Analytics becoming popular now?

Application of Analytics in business

Analytics vs Data warehousing,

MIS Reporting Various Terminology in Analytics

Various Analytics Methodology

How Businesses are using the power of Analytics?

Various Analytics tools and their usage

BUSINESS STATISTICS AND APPLICATIONS

Sample v/s Population Probability Theory

Probability Distribution Concepts

Types of Distribution

Data Description - Numerical Measures of

Central Tendency Data Description -

Numerical Measures of Variability Inferential Statistics

Concepts of Hypothesis testing

Statistical Methods - Correlations, Chi Square and ANOVA

SYLLABUS

DATA SCIENCE COURSE

Support after course

Repeat sessions

HR/Tech/Manager

Interview

Resume Making by

Experts

Personal Assistance for

Placement

FUNDAMENTALS OF PYTHON

Installation of Python & R Studio

Getting started with Python

History of Python

Variable Operators in Python

Reading and Writing data files to python

Python data frames

Python Functions and Loops

Special utility functions

Merging and Sorting data

DATA IMPORTING/EXPORTING IN PYTHON

Concepts of Packages

Data Structure & Data Types

Importing Data from various sources

Database Input

Exporting data to various formats

Viewing Data

Variable & Value Labels

DATA MANIPULATION

Data Manipulation Steps Loading Vectors

Combining to Vectors Sorting and Filtering

Renaming, Formatting, Reshaping data

Operators

Functions Loops

Arrays

Cleaning Data

Converting Unstructured to Structured Data

User defined functions

Packages for Data Manipulation.

SYLLABUS

DATA SCIENCE COURSE

Support after course

Repeat sessions

HR/Tech/Manager

Interview

Resume Making by

Experts

Personal Assistance for

Placement

LOGISTIC REGRESSION

Moving from Linear to Logistic Regression
Model assumptions and odds ratio
Building Logistic Regression Model
Validation of Logistic Regression Model
Model assessment and gains table
ROC curve and KS statistics Case Study

TIME SERIES FORECASTING

Concepts of Packages
Data Structure & Data Types
Importing Data from various sources
Database Input
Exporting data to various formats
Viewing Data
Variable & Value Labels

PYTHON PROGRAMMING

Performing various regression and data
mining Techniques using Python

INTRODUCTION TO DATA ANALYTICS WITH PYTHON

Installing Python Anaconda Distribution
Python native data types
Basic programming concepts
Python data science packages overview

PYTHON BASICS: BASIC SYNTAX, DATA STRUCTURES

Python Objects
Math and Comparison Operators
Conditional Statement
Loops
Functions
Exception handling

SYLLABUS

DATA SCIENCE COURSE

Support after course

Repeat sessions

HR/Tech/Manager

Interview

Resume Making by

Experts

Personal Assistance for

Placement

PYTHON CONCEPTS (CORE)

Overview and history of python

Python Installation

Introduction to python Editors and IDE'S

Understand Jupyter notebook and customize settings

Concept of Packages/Libraries - Important packages (Numpy, SciPy, Scikit-learn, Pandas, Matplotlib etc.)

Installing and loading Packages and Name Spaces

Data Types and Data objects/structures, List and Dictionary Comprehensions

Variables and Value Labels - Date and Time Values Basic Operations - Mathematical - String - Date Reading and writing data

Simple plotting

Control flow and conditional statements

Debugging and Code profiling

How to create class and modules and how to call them?

NUMPY PACKAGE

What is Numpy?

Installing Numpy

Numpy Overview

Numpy Array creation and basic operation

Numpy universal function

Selecting and retrieving data Data slicing

Iterating Numpy Data Shape Manipulation

Stacking and Splitting Arrays

Copies and Views: no copy, shallow copy, deep copy

Indexing : Arrays of indices, Boolean Arrays

DATA SCIENCE COURSE

SYLLABUS

Support after course

Repeat sessions

HR/Tech/Manager

Interview

Resume Making by

Experts

Personal Assistance for

Placement

INTRODUCTION TO PANDAS

Selecting data from Pandas DataFrame
Slicing and dicing using Pandas
GroupBy/Aggregate Strings with Pandas
Cleaning up messy data with Pandas
Dropping Entries
Selecting Entries

DATA MANIPULATION USING PANDAS

Data Alignment
Sorting and Ranking Summary
Statistics Missing Values
Merging data Concatenation
Combining DataFrames Pivot
Duplicates Binning

PANDAS PACKAGE

Importing Pandas & Pandas Overview
Object creation: Series Object, DataFrame
Object View Data
Selecting data by Label
Position Data Slicing
Boolean Indexing Setting Data

PYTHON ADVANCE: DATA MUGGING WITH PANDAS

Applying functions to data Histogramming
String methods
Merge Data: Concat, Join and Append
Grouping and Aggregation
Reshaping
Analysing Data for missing values
Filling missing values: fill with constant
forward filling, mean Removing Duplicates
Transforming Data

SYLLABUS

DATA SCIENCE COURSE

Support after course

Repeat sessions

HR/Tech/Manager

Interview

Resume Making by

Experts

Personal Assistance for

Placement

PYTHON ADVANCE: VISUALIZATION WITH MATPLOTLIB

Anatomy of Matplotlib Plot

Matplotlib basic plots and its containers

A Matplotlib figure, its components and properties
Axes and other graphical objects

PYLAB AND PYPLOT

Data for Matplotlib Plots

What is a Subplot?

Modifying size of figures

Plotting routines with pyplot

Customizing your pyplot

Deleting an Axes

Setting up Plot Title, Axes Labels, Legend,

Layout Showing, Saving and Closing your Plot

Save a Plot as an image file and pdf file

Use `cla()` , `clf()` or `close`

INTRODUCTION TO MACHINE LEARNING

What is Machine Learning?

Data Science Vs Machine Learning

Fundamentals of Machine Learning

Converting business problems to data
problems

Understanding supervised and unsupervised
learning with examples
Understanding biases
associated with any Machine learning
algorithm

Drivers of Machine Learning algorithms

Cost Functions

Brief Introduction to gradient descent

Importance of model validation

Overview of cross validation
Model performance metrics

SYLLABUS

DATA SCIENCE COURSE

Support after course

Repeat sessions

HR/Tech/Manager

Interview

Resume Making by

Experts

Personal Assistance for

Placement

SUPERRVISED LEARNING

Classification

Decision tree

Naive Bayes

Logistic Regression

Support Vector Machine Regression

Linear Regression

Support Vector Machine

Know your neighbour (KNN)

Ridge Regression

What is Model Complexity

What is Generalization performace

Understanding the connection between

Model Complexity and

Generalization performace

Importance of proper feature scaling

How to control model complexity by applying techniques like regularization to avoid overfitting

Use of cross-validation for model evaluation

EVALUATION

Understanding of Evaluation and model selection methods Optimize the performance of Machine Learning models

ADVANCE SUPERVISED MACHINE LEARNING CONCEPTS

Ensembles of trees (random forests, gradient boosted trees) Neural networks Learning the critical problem of data leakage in machine learning and how to detect and avoid it

OTHER COURSES FROM RISE INSTITUTE



**SQL DATA
MANAGEMENT**

01



PYTHON

02



**ADVANCE
EXCEL**

03



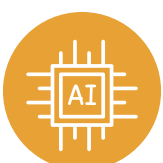
**DATA ANALYTICS
- POWER BI**

04



**MACHINE
LEARNING**

05



**ARTIFICIAL
INTELLIGENCE**

06



**DEEP LEARNING,
COMPUTER VISION**

07



797-213-1295

riseinstitute.tech

CAREER JOURNEY AT RISE INSTITUTE

ENROLLMENT



1

2



80%
PRACTICAL

20% THEORY



3

4



LIVE PROJECTS

MOCK
INTERVIEWS



5

6



RESUME
PREPARATION

JOB PROFILE
CREATION



7

8



BE JOB READY

OUR RECENT STARS

CONGRATULATIONS!!!
For Getting Placement in MNC Company



PACKAGE ● [8.5 LPA](#)
COMPANY ● [TECNOSOFT ENGINEERING PROJECT PVT.LTD](#)
DESIGNATION ● [Power BI Developer](#)
EDUCATION ● [B.SC Biotechnology](#)

YASIR.Q

CONGRATULATIONS!!!
For Getting Placement in MNC Company



PACKAGE ● [12.5 LPA](#)
COMPANY ● [COGNIZANT PVT.LTD](#)
DESIGNATION ● [BI DEVELOPER](#)
EDUCATION ● [B.E IT](#)

PRITHVI.M


CONGRATULATIONS!!!
For Getting Placement in MNC Company



PACKAGE ● [6.6 LPA](#)
COMPANY ● [D.S INFOTECH PVT.LTD](#)
DESIGNATION ● [PLSQL ENGINEER](#)
EDUCATION ● [B.E](#)

GITANJALI.D


CONGRATULATIONS!!!
For Getting Placement in MNC Company



PACKAGE ● [3.5 LPA](#)
COMPANY ● [MSWIPE PVT.LTD](#)
DESIGNATION ● [SQL DEVELOPER](#)
EDUCATION ● [B.E](#)

DINESH.H

CONGRATULATIONS!!!
For Getting Placement in MNC Company



PACKAGE ● [14 LPA](#)
COMPANY ● [GIGAPLEX PVT.LTD](#)
DESIGNATION ● [DATA ANALYST](#)
EDUCATION ● [B.E EXTC](#)

ANKIT.B

CONGRATULATIONS!!!
For Getting Placement in MNC Company As Fresher



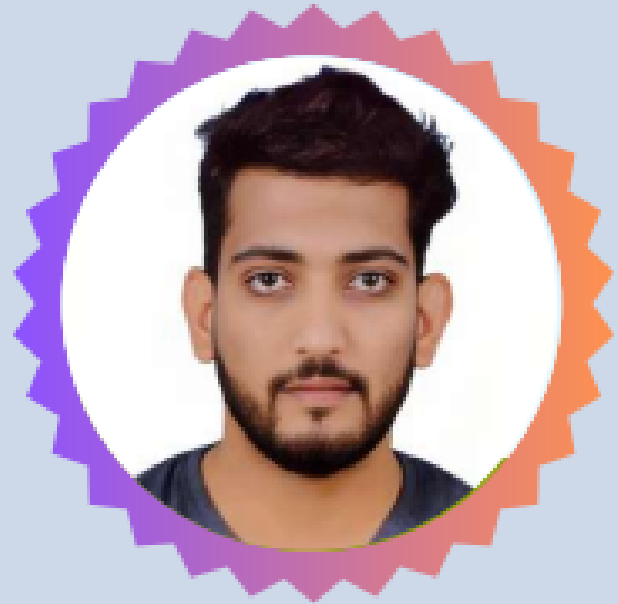
PACKAGE ● [3.6 LPA](#)
COMPANY ● [SFL PVT.LTD](#)
DESIGNATION ● [\(SQL\) DEVELOPER](#)
EDUCATION ● [B.COM](#)



Vaibhav D. | Business Analyst



| 6.7 LPA



Harshal M. | Power BI Developer

| 11 LPA



Yadnesh T. | SQL Support Engineer



| 5 LPA



Tushar W. | BI Developer
Honeywell | 10.5 LPA



Shubham K. | QA Engineer
Infosys | 11.5 LPA



Sameer B. | SBI Associate



| 7.5 LPA



RISE INSTITUTE

Contact Us

Don't hesitate to ask everything about us!



WWW.RISEINSTITUTE.TECH



7972131295 / 9324288446



RISEACADEMY777@GMAIL.COM



**OFFICE NO 36, AKSHAR GEOMETRIX
SILVER CHRIST KAMOTHE SECTOR-25,
KHANDESHHWAR, NAVI MUMBAI**



@RISEINSTITUTEMUMBAI



@RISEINSTITUTEMUMBAI



@RISEINSTITUTEMUMBAI



www.riseinstitute.tech